

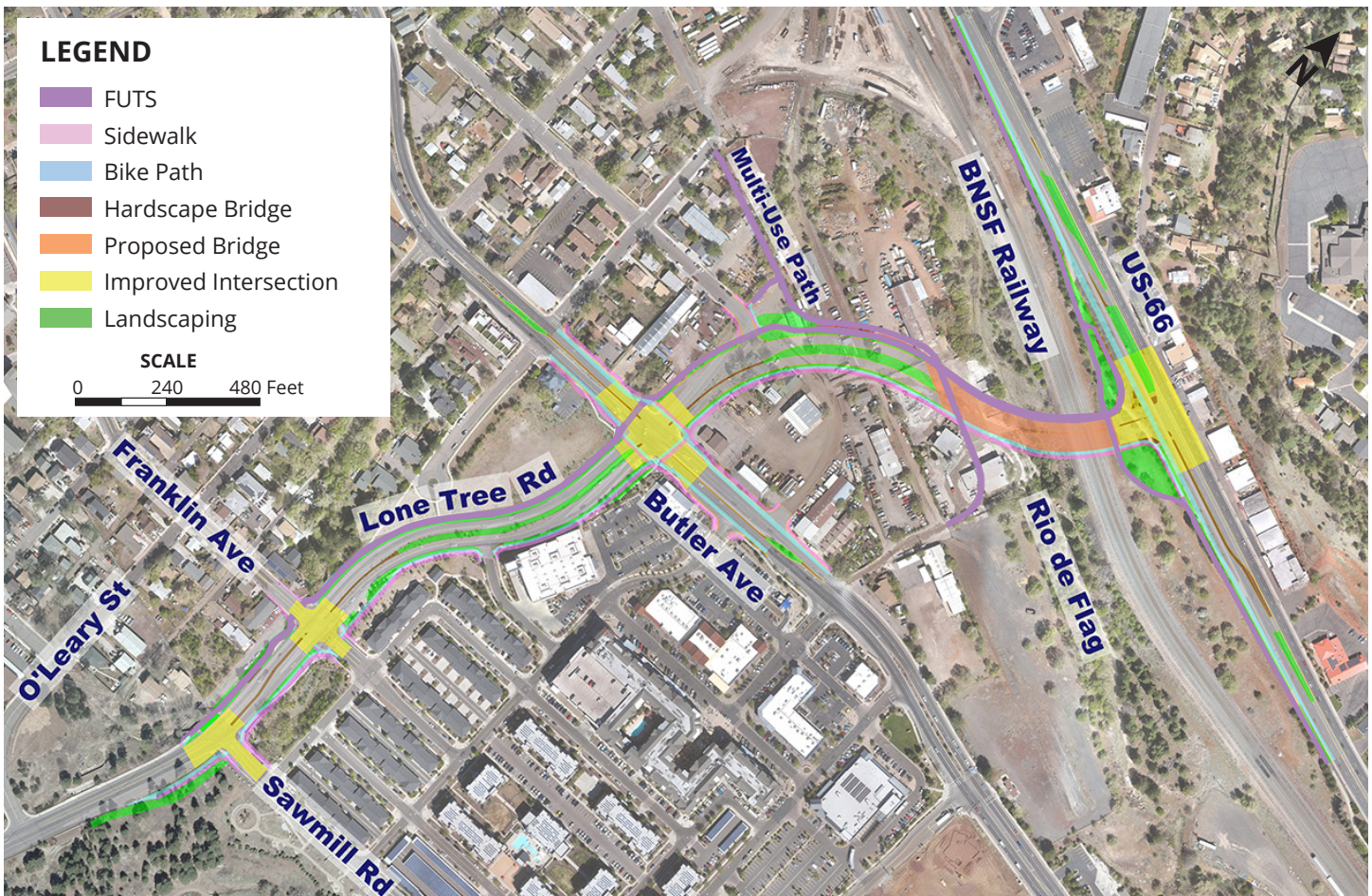


About the Project

The Lone Tree Overpass will widen Lone Tree Road between O'Leary Street and Butler Avenue and create a new north-south roadway extending Lone Tree Road between Butler Avenue to the south and Route 66 to the north. The roadway will be on a grade-separated bridge that will go over the BNSF Railway (BNSF) main line corridor and the United States Army Corps of Engineers (USACE) Rio de Flag Flood Control Project.

Improvements completed as part of this project include:

- ✓ 0.3 miles of new roadway between Butler Avenue and Route 66
- ✓ 0.3 miles of roadway widening between O'Leary Street and Butler Avenue
- ✓ 0.6 miles of new bicycle lanes (off-roadway)
- ✓ 1.2 miles of new sidewalk between O'Leary Street and Route 66
- ✓ 0.6 miles of new trails (Flagstaff Urban Trail System connection from Route 66 to O'Leary Street)
- ✓ One new intersection at Lone Tree Road and Route 66
- ✓ Three rebuilt intersections along Lone Tree Road at Butler Avenue, Sawmill Road, and Franklin Avenue
- ✓ Protected bicycle and pedestrian facilities along Lone Tree Road
- ✓ Landscape, utility, and drainage improvements
- ✓ Traffic congestion relief on Milton Road, Beaver Street, and San Francisco Street



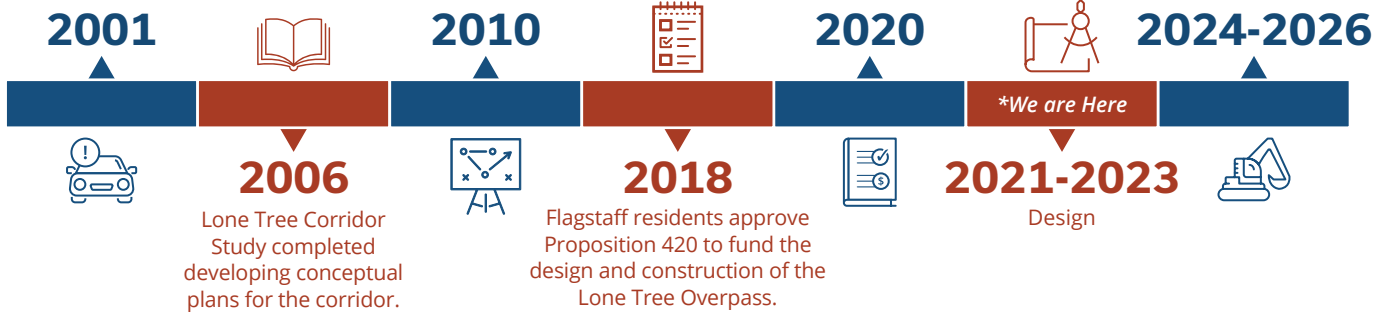
Project Timeline

The City of Flagstaff's Regional Land Use and Transportation Plan revealed the need for an additional grade separated north-south connection into downtown Flagstaff.

Lone Tree Overpass Study developed project alternatives and recommended a proposed alignment.

Lone Tree Overpass Study Final Report Update updated recommendations and cost from the 2010 Lone Tree Overpass Study.

Construction



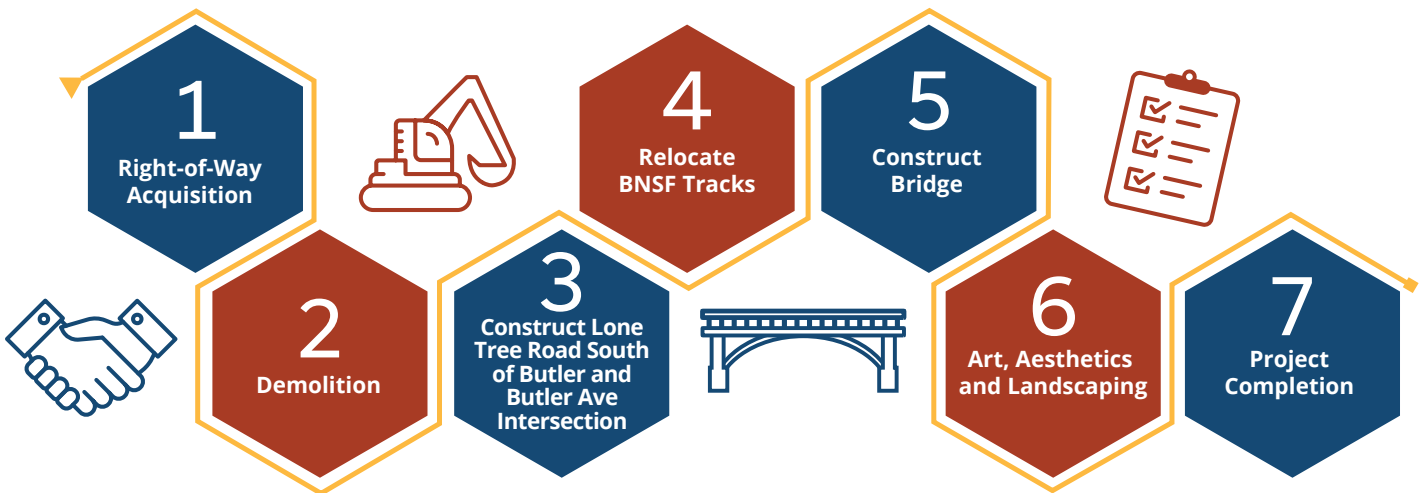
Project Update

Over the last year, the project team has been continuing the final design of the project. Activities have included holding a public meeting in summer 2022 to gather input and coordinating with numerous agencies and project partners such as BNSF, USACE and the Arizona Department of Transportation to develop the design of the overpass. The design team has also coordinated with the public, City Boards and Commissions, and Flagstaff City Council to develop protected intersection design. Additionally, the project artist and landscape designers have been finalizing the public art and aesthetic designs, and the City of Flagstaff has continued to acquire right-of-way for the project.

Next Steps

Through the end of 2023, final design will be completed, and Ames Construction field staff will be removing structures. Roadway construction is anticipated to begin in 2024. The graphic below describes the proposed phases of construction. A public meeting to discuss construction activities is planned for early 2024.

Phases of Construction



More Information

Visit the project website to view project materials, get information on upcoming public meetings and to join the email distribution list.

LoneTreeOverpass.org

Contact

Christine Cameron

Project Manager, City of Flagstaff

928-213-2682

Project email:

info@lonetreeoverpass.org