



LONE TREE OVERPASS





AGENDA

- ✧ Project Overview
- ✧ Intersection Design
- ✧ Project Aesthetics
- ✧ Next Steps





Project Overview

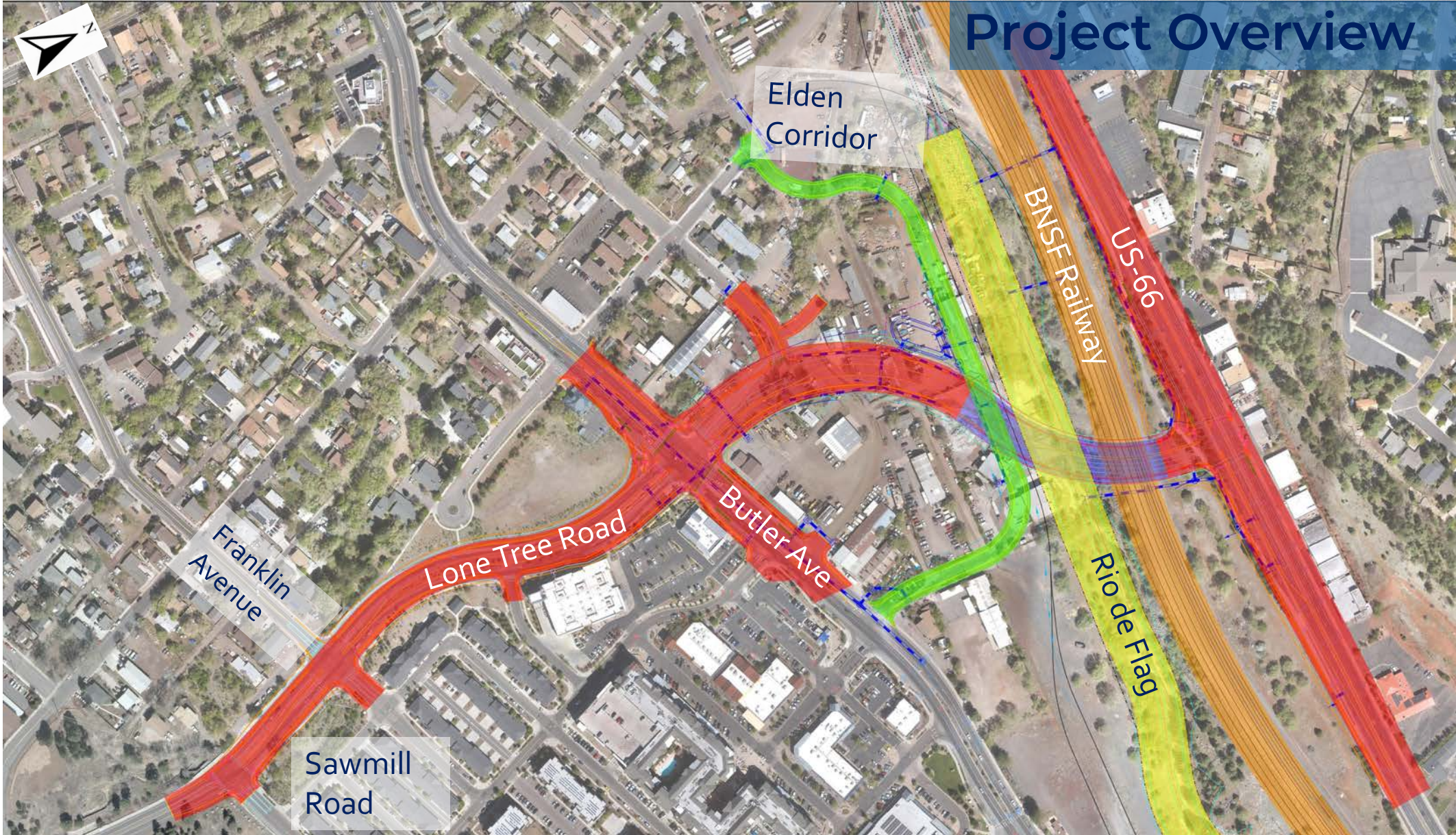


Project Timeline

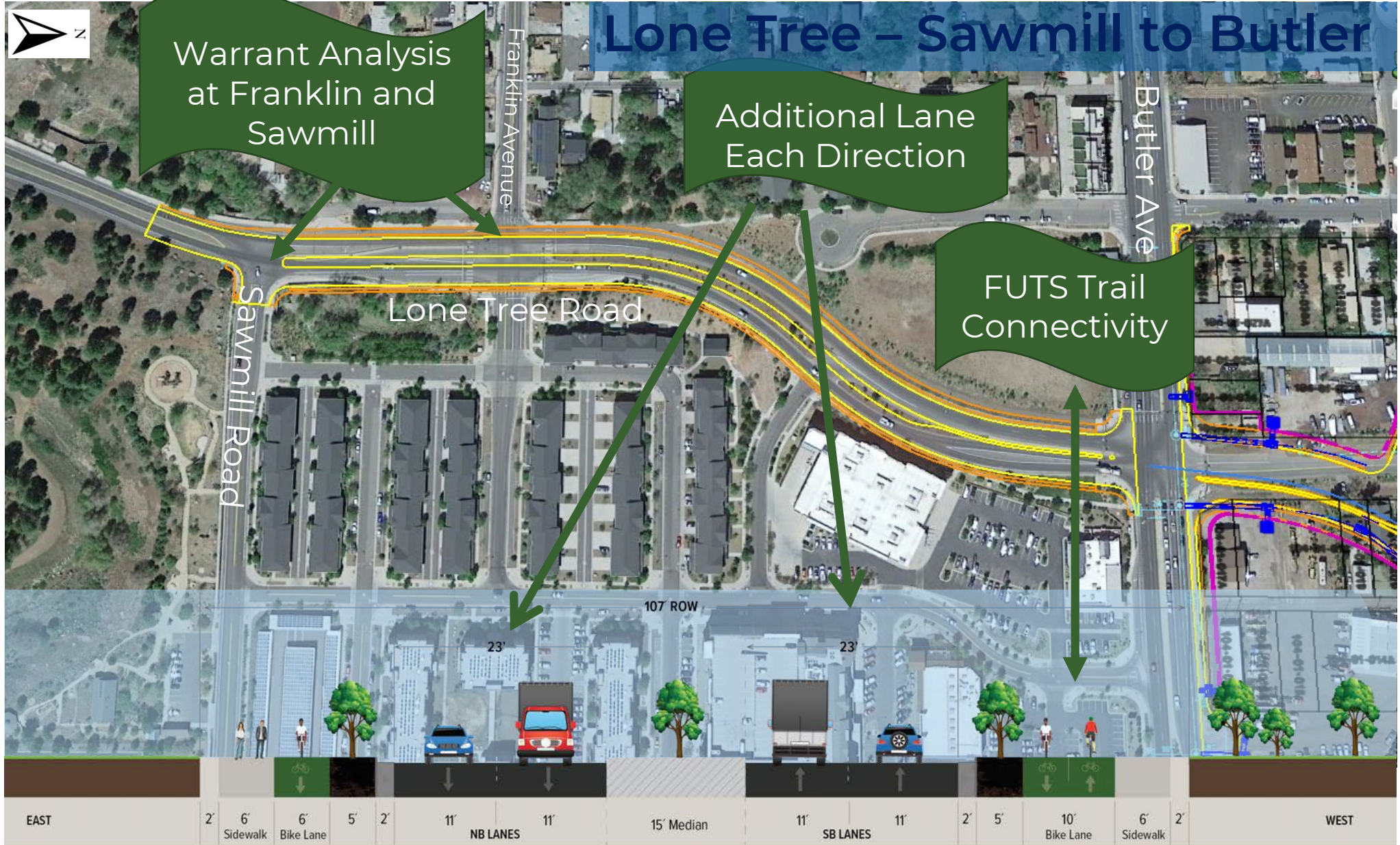
- ✧ **2001** – Regional Land Use and Transportation Plan revealed the need for an additional north-south connection into downtown.
- ✧ **2006** – Lone Tree Corridor Study developed conceptual plans for the corridor.
- ✧ **2010** – Developed project alternatives and recommended proposed alignment.
- ✧ **2018** – Proposition 419 and 420 approved to fund the overpass and corridor improvements.
- ✧ **2020** – Updated recommendations and cost from 2010.



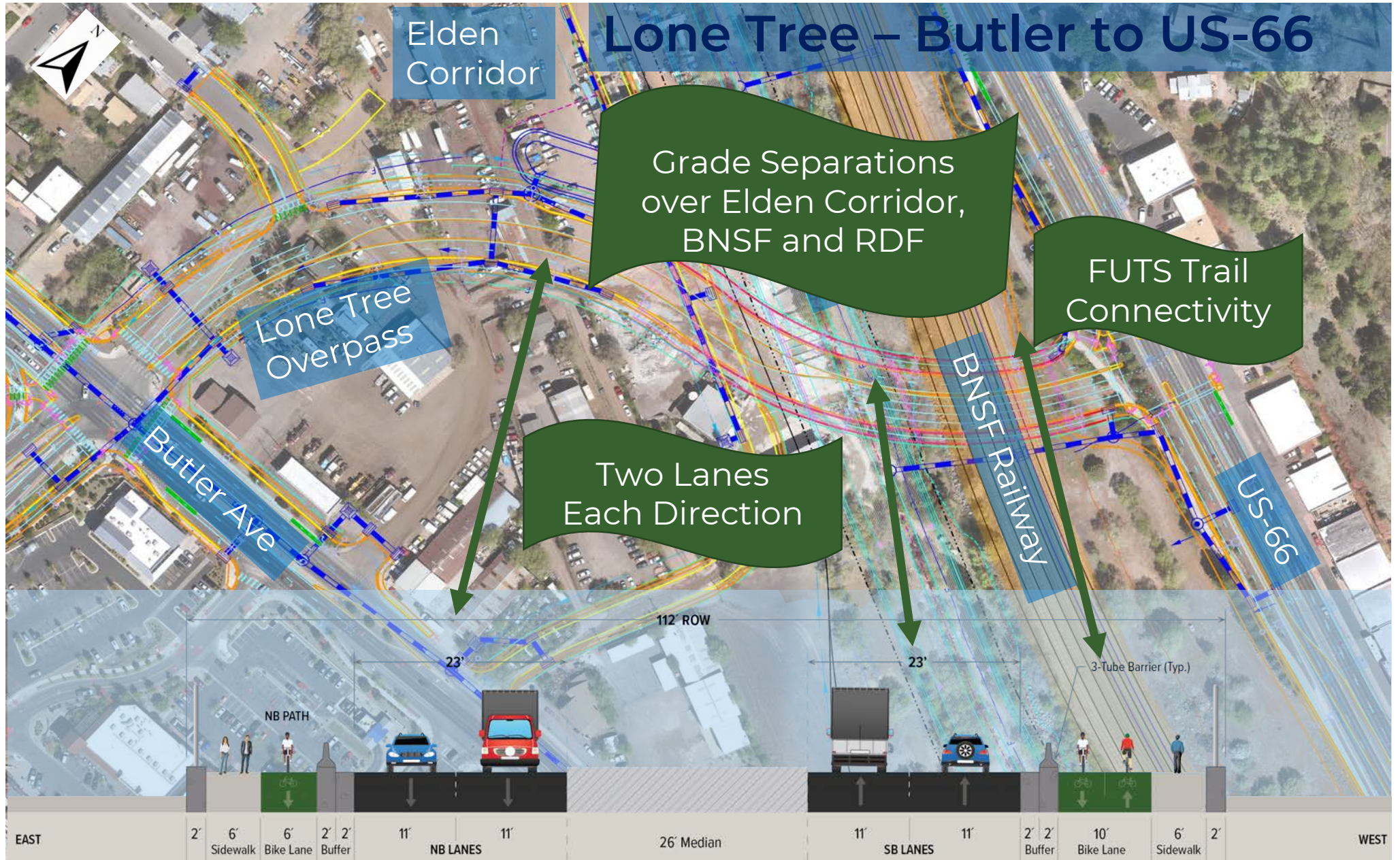
Project Overview



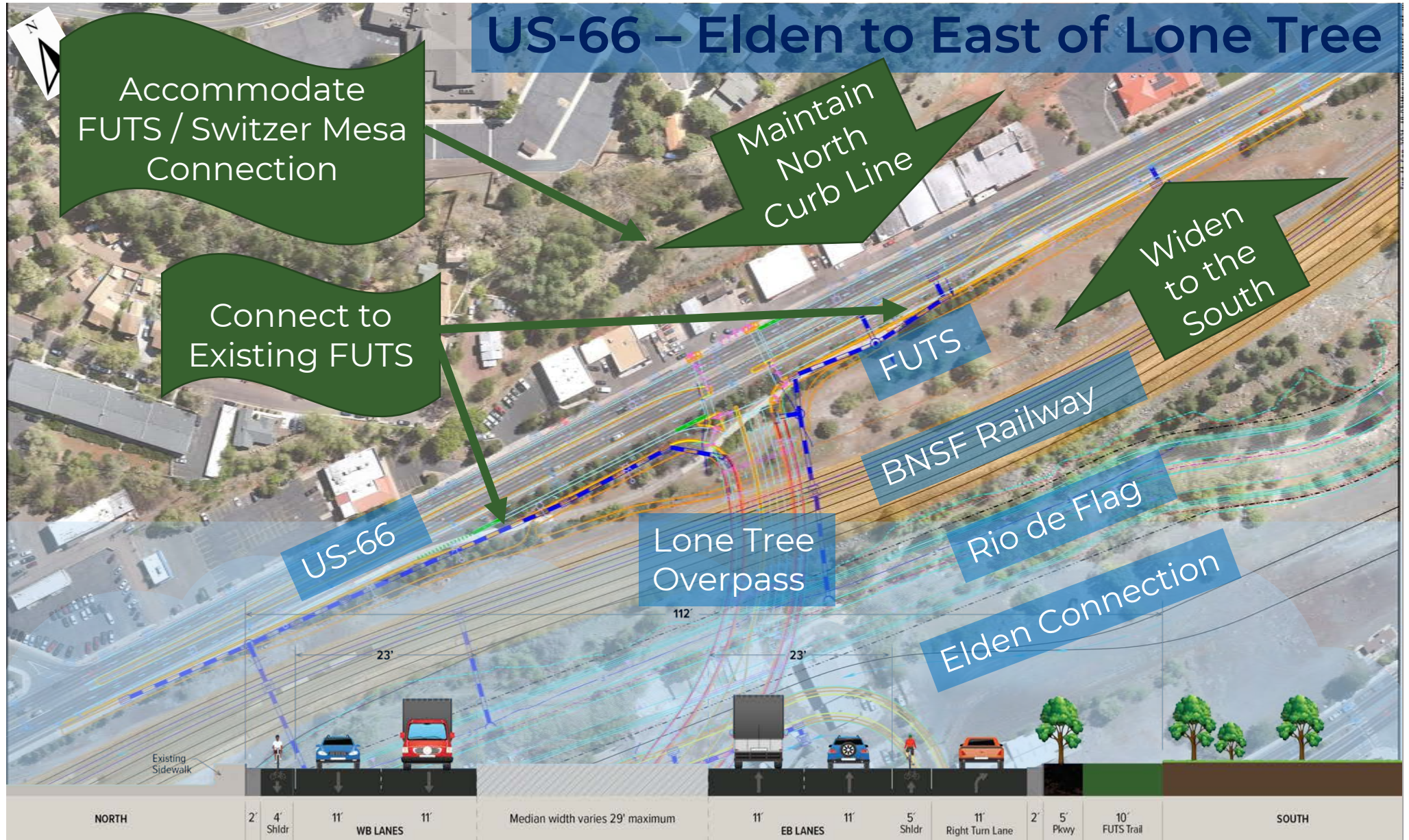
Lone Tree - Sawmill to Butler



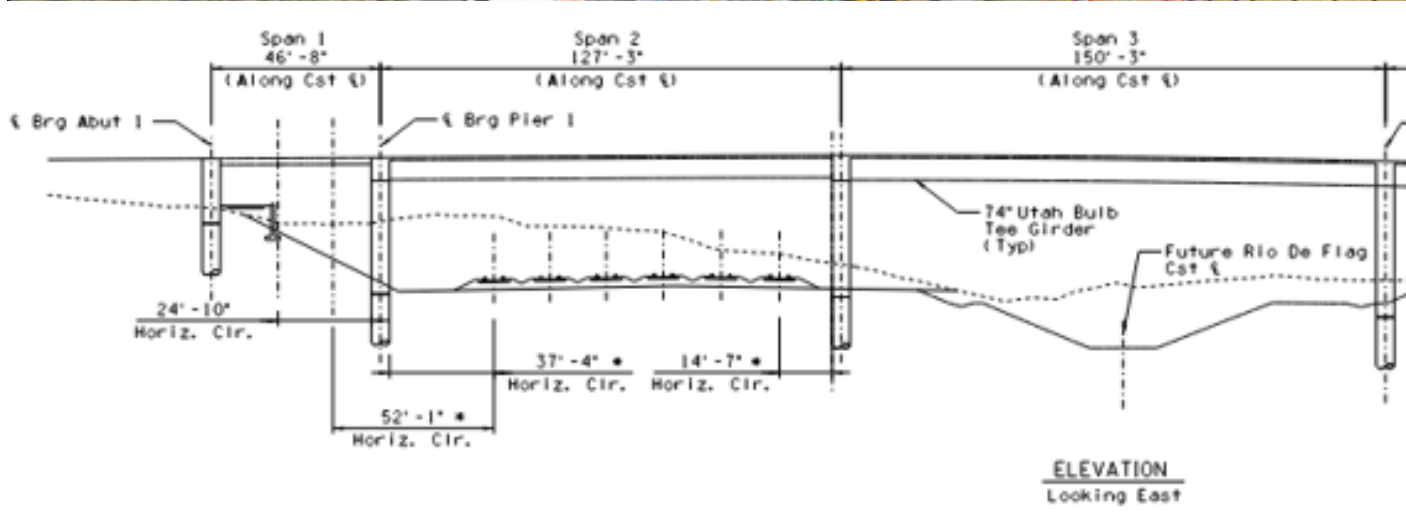
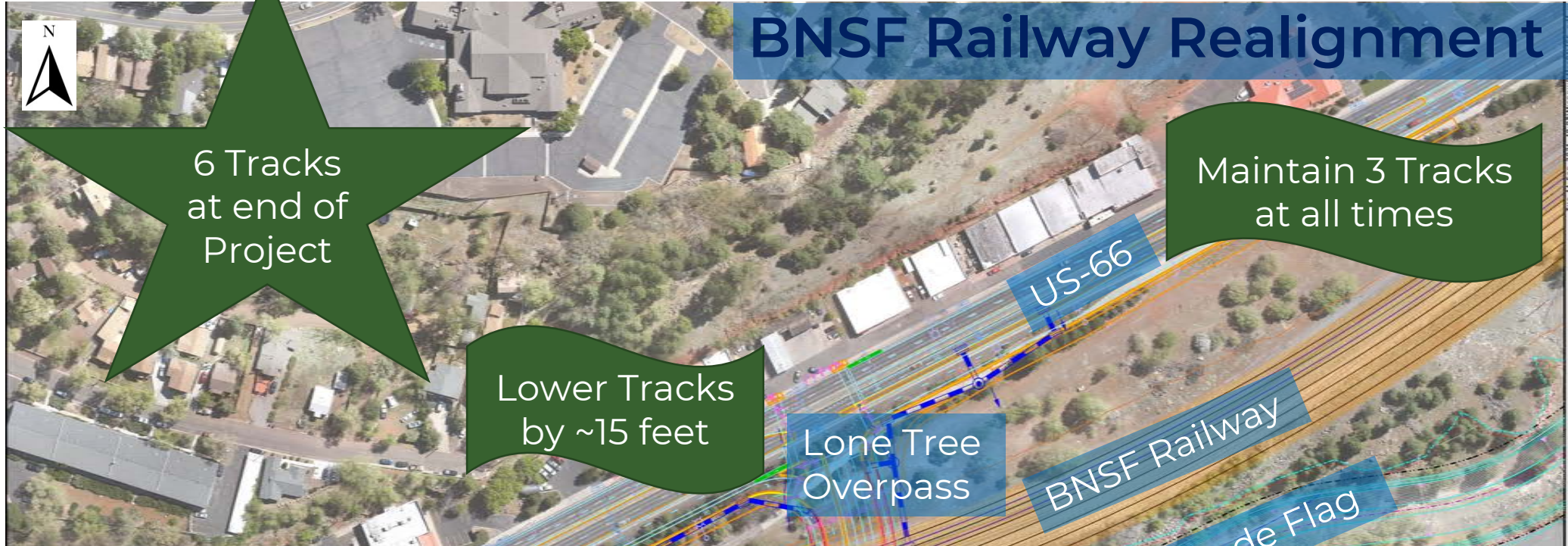
Lone Tree – Butler to US-66



US-66 – Elden to East of Lone Tree



BNSF Railway Realignment





Preliminary Visualization





Intersection Design



Approach to Intersection Design

What is complete:

Data Collection

Coordination on
Regional
Transportation
Model

Coordination
with ADOT on
US-66
Alternatives

Data
Evaluation

What is in progress:

Intersection
Type Evaluation

Coordination with
Transportation
Commissions

Public Meeting
September 30th

What's next:

Compile
Feedback

Decide on the
Multi-Modal
Enhancements

Present to
Council
October 19th

Lone Tree Road & Butler Avenue – Intersection

Viable Intersections

Viable based on:

- Efficient use of Right-of-Way
- Lowest Impact to adjacent Property
- Accommodates predicted Traffic Volumes
- Addresses Multi-Modal Concerns



Options to Enhance Multi-Modal Use of Intersection



National Association of City Transportation Officials



Don't Give Up at the Intersection

Designing All Ages and Abilities
Bicycle Crossings



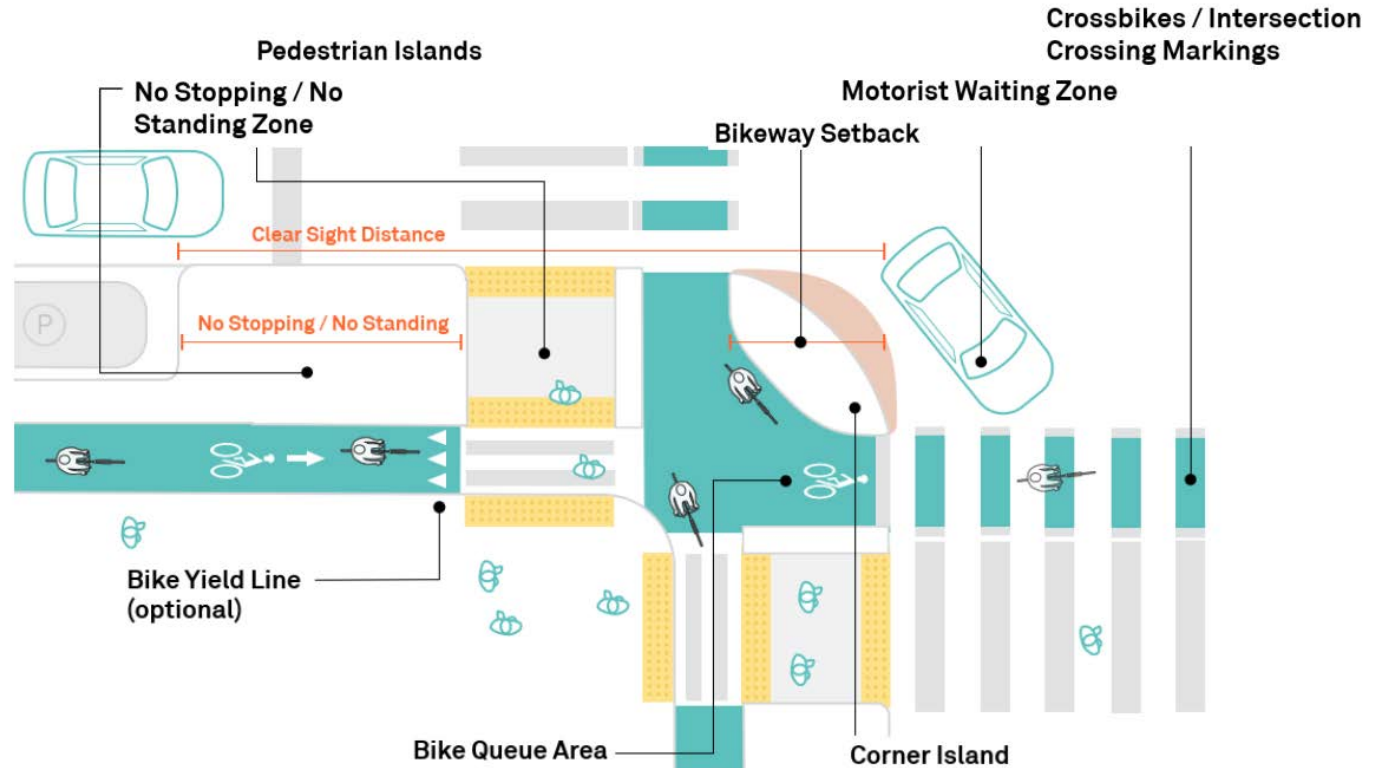
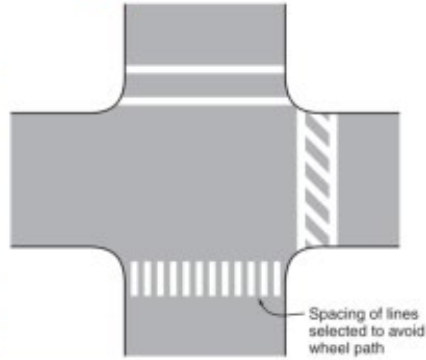
May 2019



(Example Only, not a Project Intersection)

Options to Enhance Multi-Modal Use of Intersection

Pavement Markings



High Visibility Crosswalks
Protected Intersection - Green Bike Crossing
Bike Symbols w/Arrows for Direction of Travel
Sharrows for areas of Shared Vehicles/Bikes

Options to Enhance Multi-Modal Use of Intersection

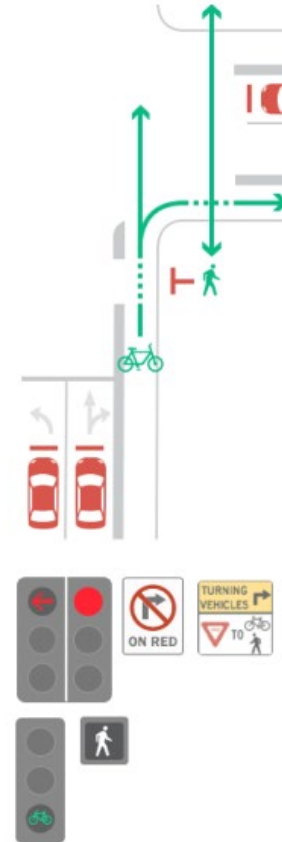
Signals



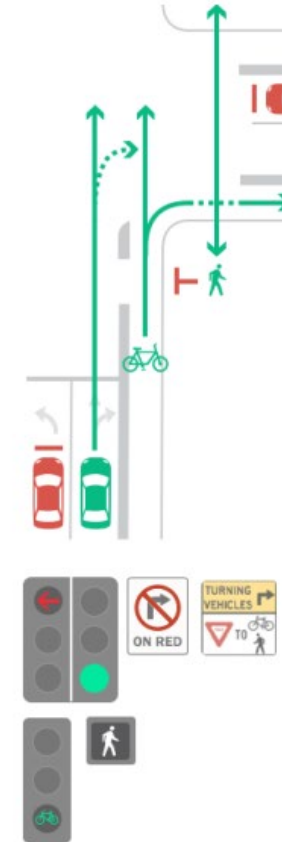
*Specialty Signals with Bike Symbol
Countdown Pedestrian Signals*



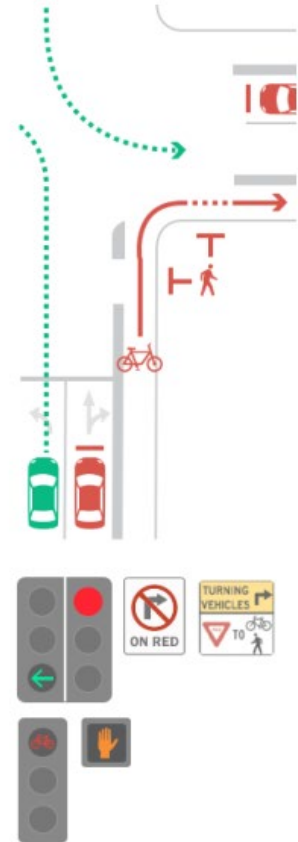
Phase A



Phase B



Phase C



Options to Enhance Multi-Modal Use of Intersection

Islands and Medians



(Source: Google Maps, Boulder, Colorado)



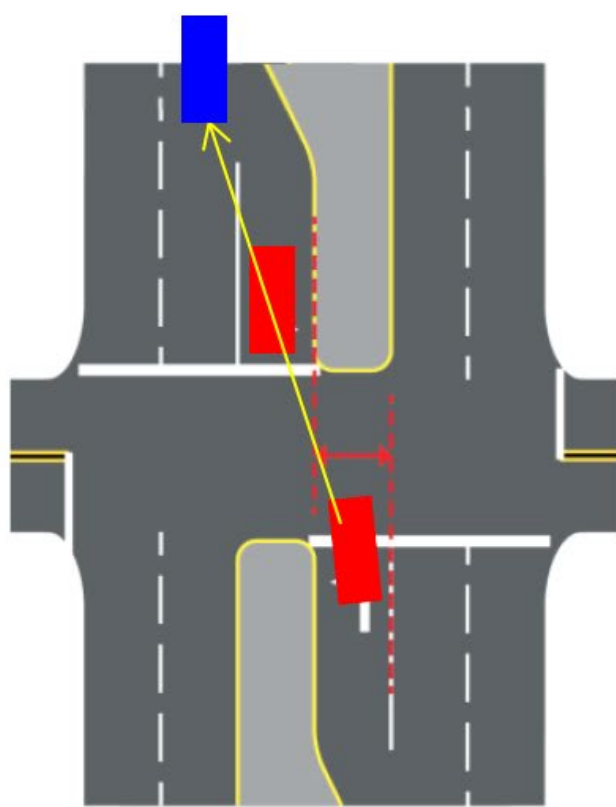
Separated Bike Lane



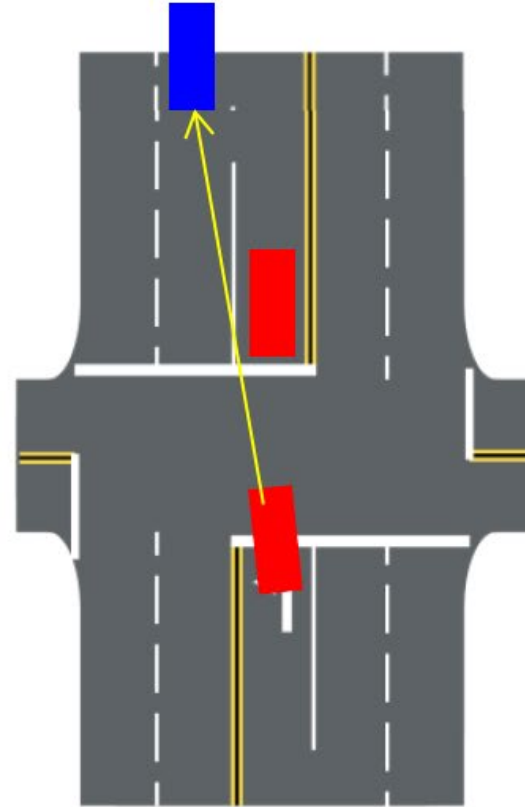
Curbing Delineators



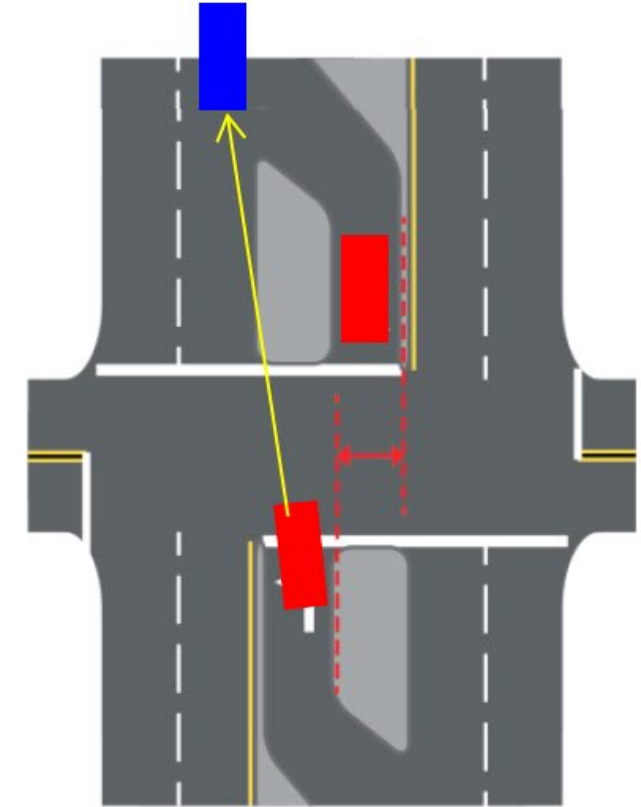
Options to Enhance Driver Safety at Intersection



Negative Offset



Zero Offset



Positive Offset

Lone Tree Road & Butler Avenue – Intersection Comparisons



Traditional Intersection – Minor Enhancements

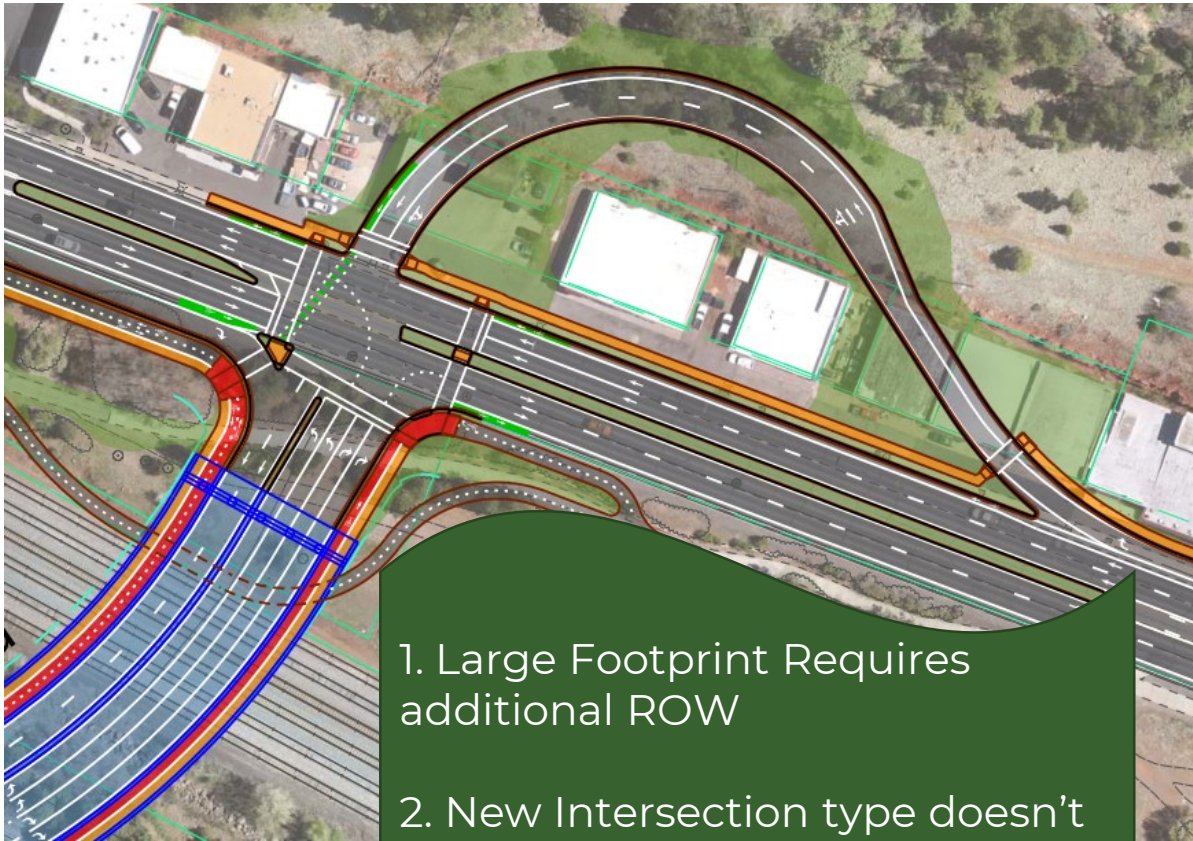
Lone Tree Road & Butler Avenue – Intersection Comparisons



Traditional Intersection – Full Enhancements

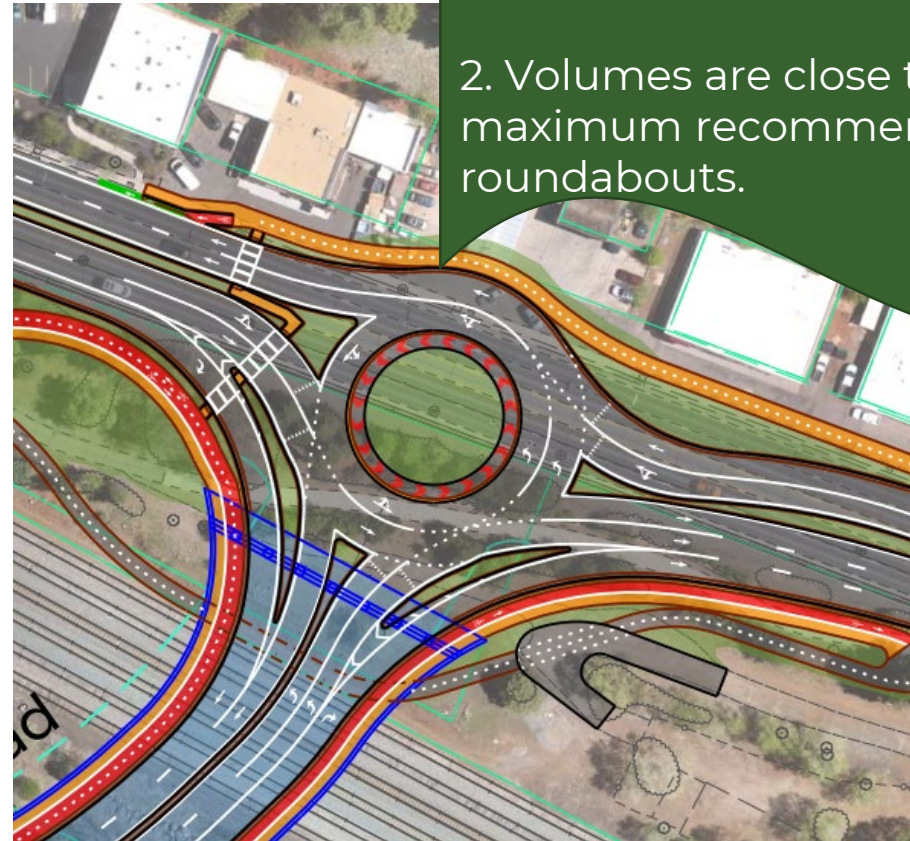
Lone Tree Road & US-66 – Intersection Non-Viable Intersections

Jughandle



1. Large Footprint Requires additional ROW
2. New Intersection type doesn't meet driver expectations.

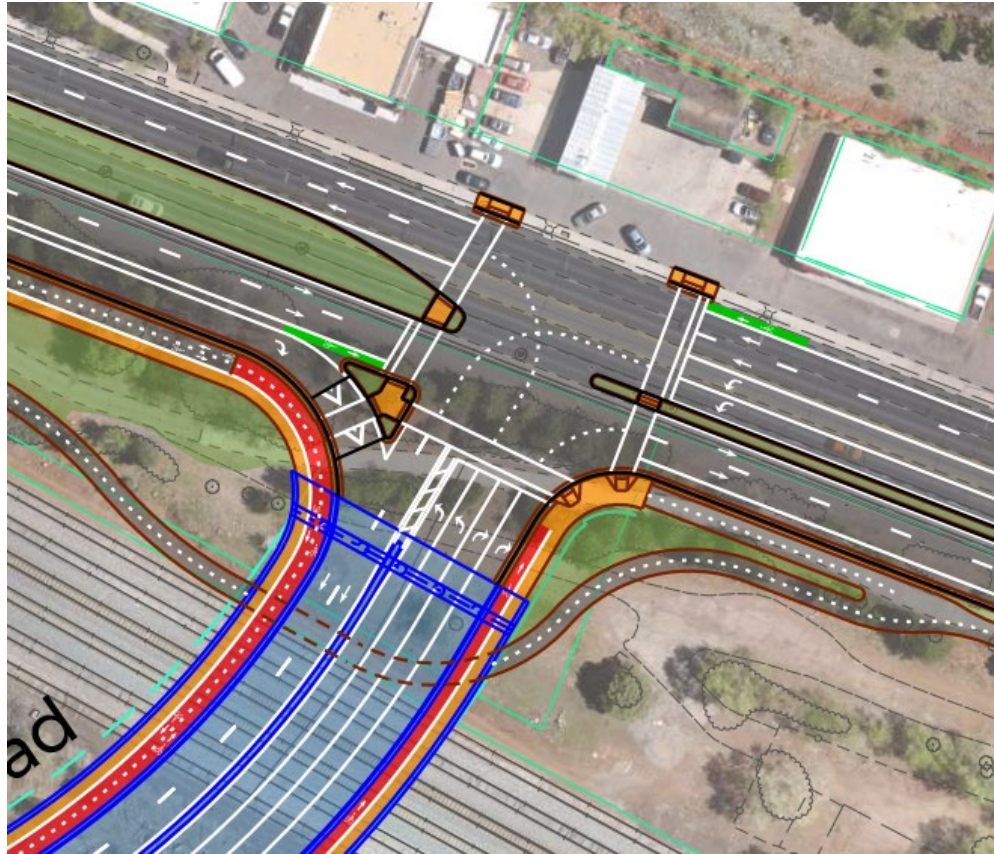
Roundabout



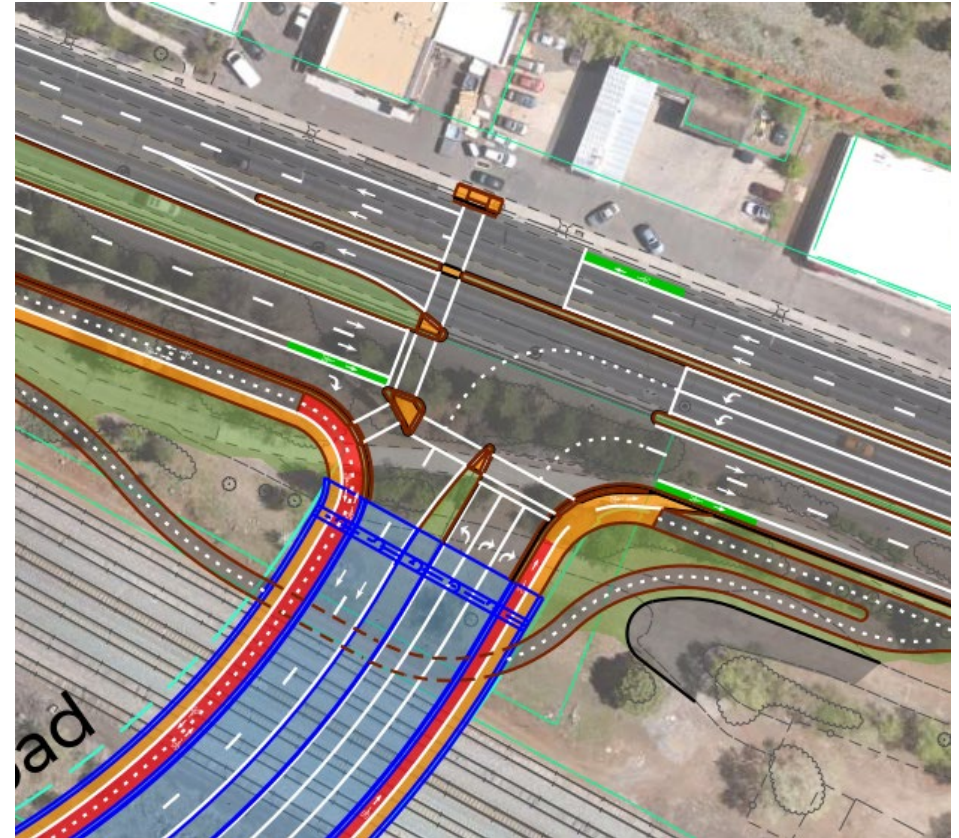
1. Large Footprint Requires additional ROW
2. Volumes are close to maximum recommended for roundabouts.

Lone Tree Road & US-66 – Intersection Viable Intersections

Conventional Intersection



Florida "T"



Lone Tree Road & US-66 – Intersection Viable Intersections



Florida T – No Enhancements

Lone Tree Road & US-66 – Intersection Viable Intersections



Conventional Intersection – Minor Enhancements



Aesthetics



Aesthetic Incorporation into Design Elements



Aesthetic Incorporation into Design Elements





Landscaping Opportunities

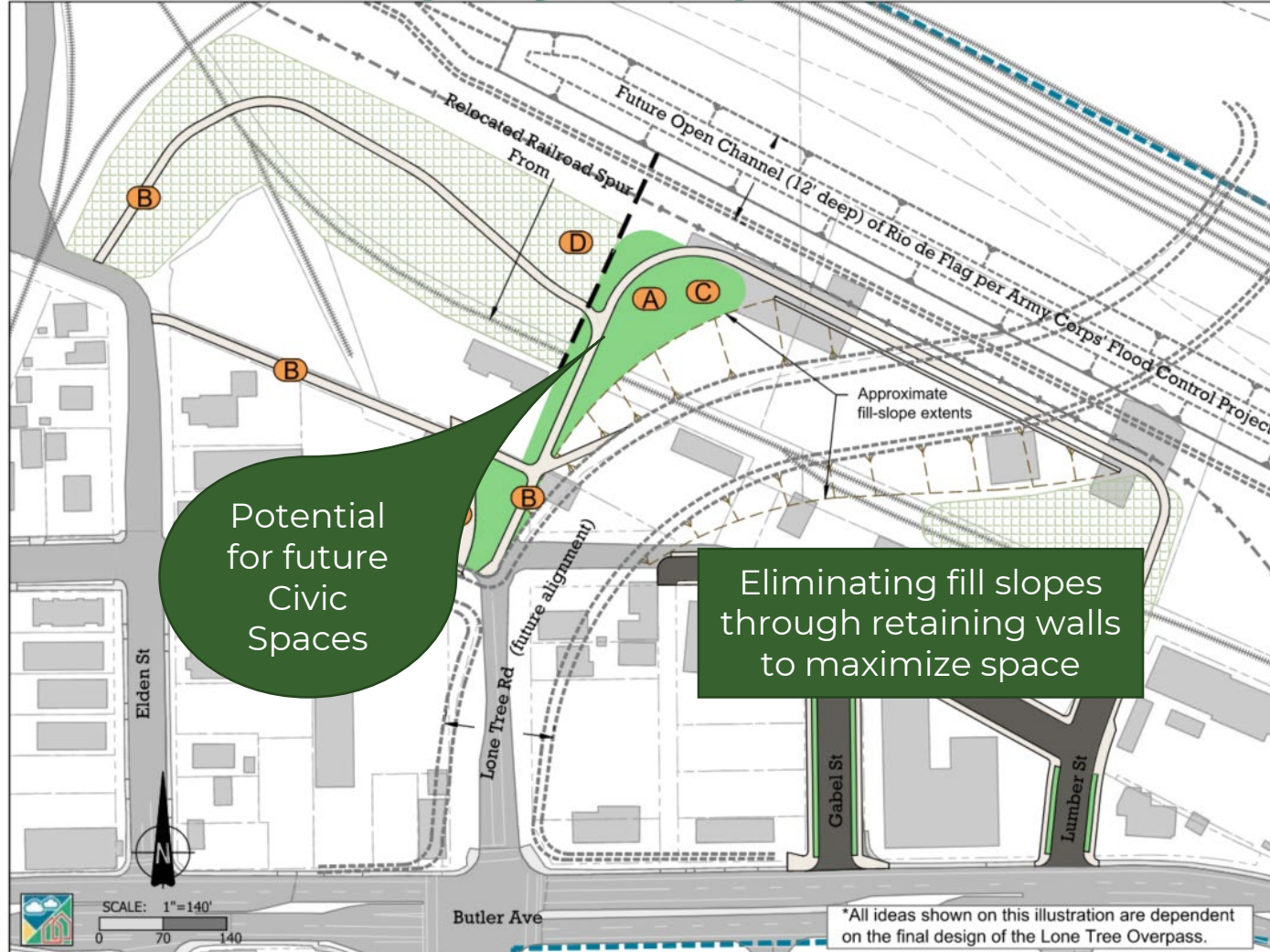


Future Civic Spaces



Future Civic Spaces

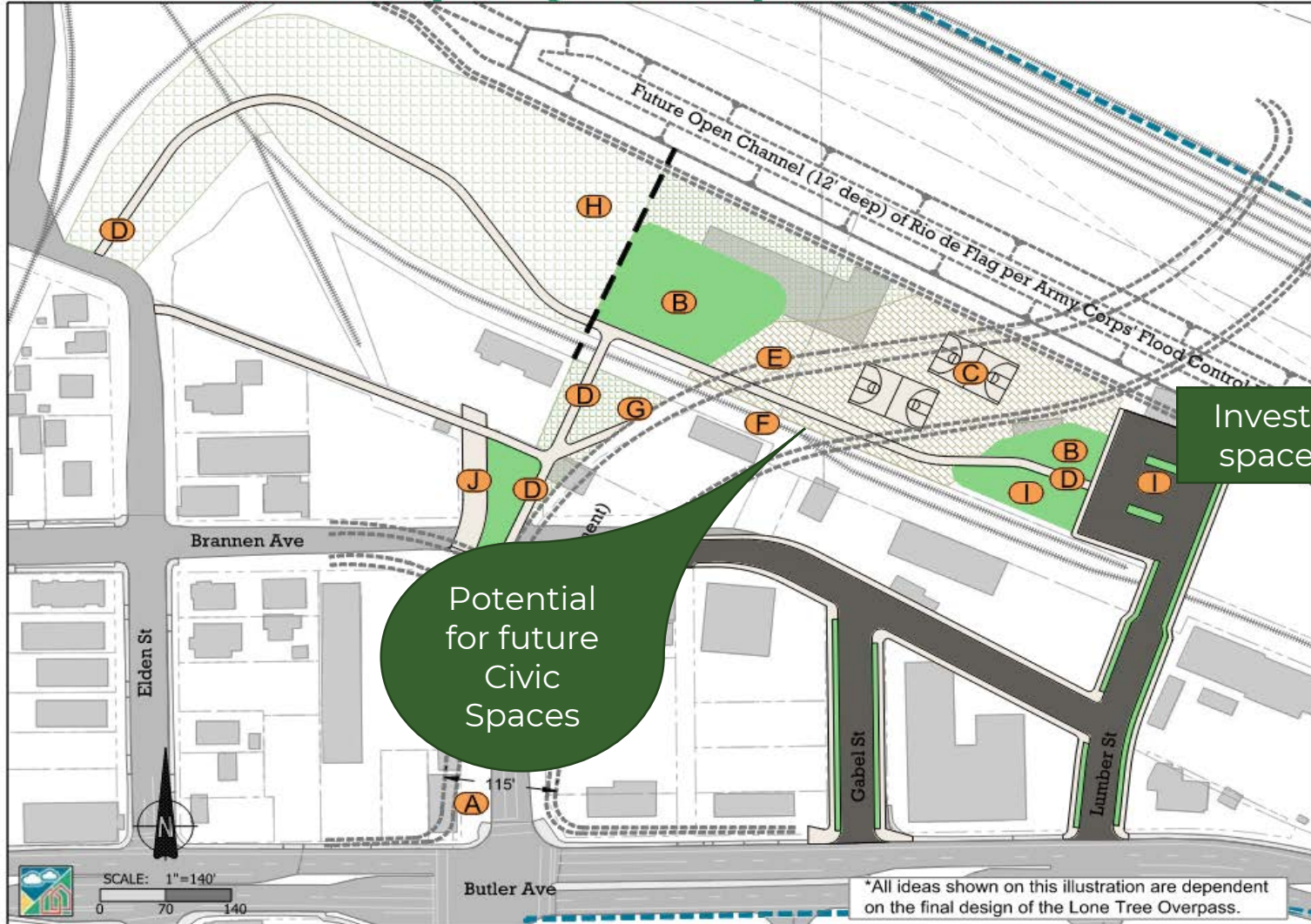
Lone Tree Overpass Larger Park Concept Illustration Scenario 1



*All ideas shown on this illustration are dependent on the final design of the Lone Tree Overpass.

Future Civic Spaces

Lone Tree Overpass Larger Park Concept Illustration Scenario 2



Investigating usable space under bridge

Potential for future Civic Spaces

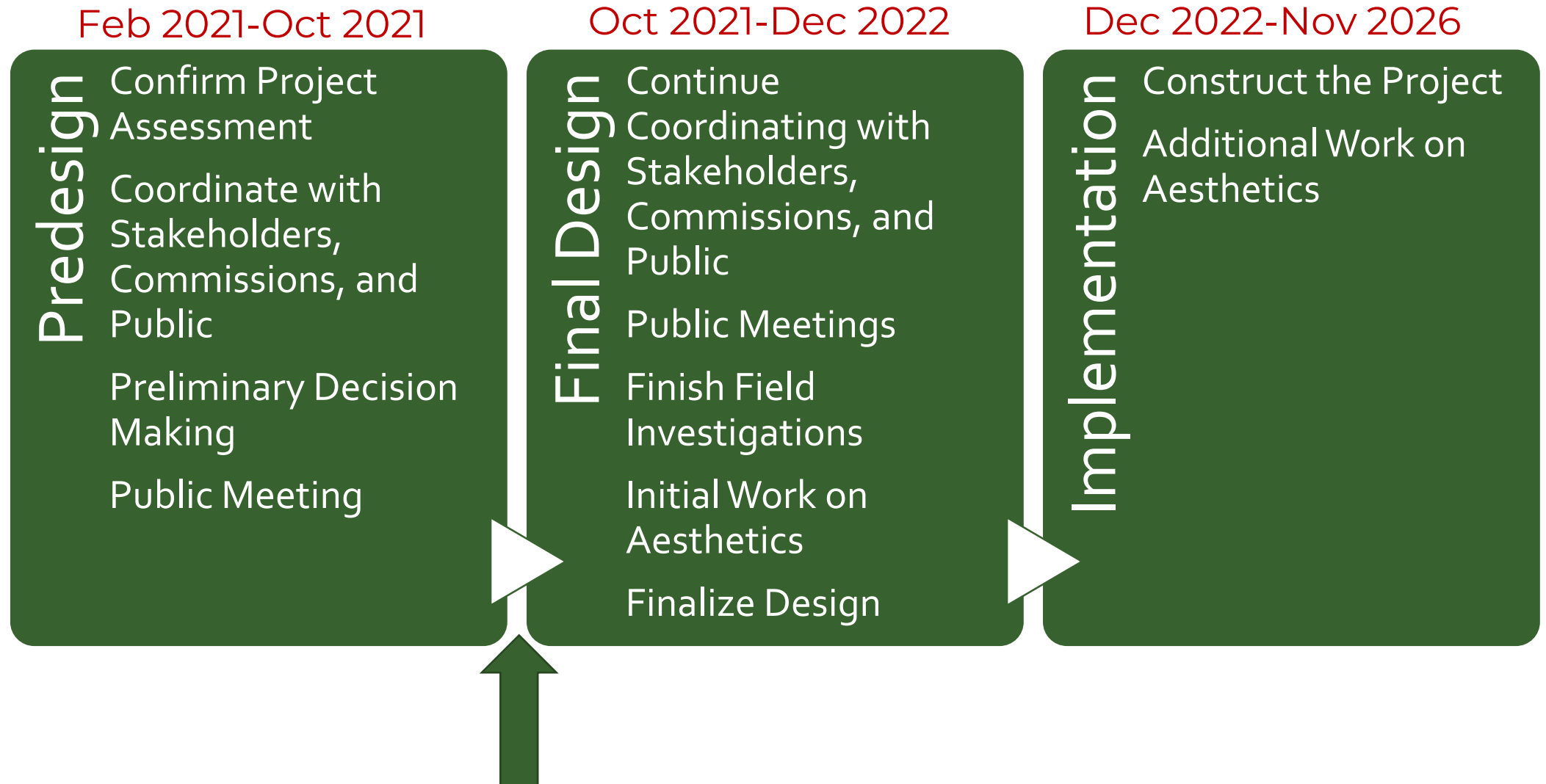
*All ideas shown on this illustration are dependent on the final design of the Lone Tree Overpass.



Next Steps



Lone Tree Schedule



Website: lonetreeoverpass.org



CITY OF
FLAGSTAFF



LONE TREE OVERPASS PROJECT

Improving mobility and safety with a new north-south roadway connection extending Lone Tree Road between Butler Avenue to the south and Route 66 to the north.

[About](#)[Public Involvement](#)[Virtual Public Meeting](#)[FAQs](#)[Documents](#)[Contact Us](#)

Website: lonetreeoverpass.org

CONTACT US

Questions or comments about the project? Please complete the form below to be added to our mailing list or provide your feedback. **required*

Would you like to be added to our mailing list? Yes

Name	Organization
Email Address	Phone Number
Mailing Address	City
State: AZ	Zip Code
Comments*	

Submit →

FAQS

[Expand All](#)

What is the Lone Tree Overpass project? ↓

Why is this project needed? ↓

What are the benefits of this project? ↓

How was this area selected for the new overpass? ↓

How is this project being funded? ↓

What is the project schedule? ↓

How can I be involved and give my input? ↓

How can I stay updated on the project? ↓

Provide Your Input

✧ Online survey:

- » English: <https://www.surveymonkey.com/r/LTOenglish>
- » Spanish: <https://www.surveymonkey.com/r/LTOspanish>

✧ Email: info@lonetreeoverpass.org

✧ Website: lonetreeoverpass.org

✧ Contact: Christine Cameron, Project Manager

ccameron@flagstaff.gov

928-213-2682



English Survey



Spanish Survey

Thank you!

